

# SENTRY DPA SERIES

## Sample Collection

### MANUAL SAMPLING

Sentry® DPA Series offers easy-to-use drip pot assemblies to collect samples within a pipeline or other pressurized system for the purpose of examining and measuring corrosion products and other contaminants, without interruption to the system. Drip pot assemblies collect the samples for analysis using a container with an interior reservoir for receiving a liquid sample, and a valve assembly coupled to the drip pot.

### MODELS

DPA-60 | DPA-150 | DPA-300 | DPA-500

### BENEFITS

Constructed from corrosion resistant 316L stainless steel, each Sentry DPA Series drip pot assembly incorporates a bleeder valve on the main chamber to relieve process pressure so the sample then can be drawn safely from the sample valve. An optional corrosion coupon can be attached to the bottom of the assembly with a fixed coupon holder for simultaneous corrosion analysis and sample collection. For easy sample collection within a pressurized system, the Sentry DPA Series is the best choice.

### FEATURES

- 60 ml, 150 ml, 300 ml or 500 ml capacity
- All process wetted parts 316L SS
- 3600 psi (248 bar) MOP from -65°F (-54°C) to 100°F (38°C)
- Corrosion coupon holder option – see reverse for available coupon holder connections
- 1/2 in or 3/4 in NPT liquid sample valve and 1/4 in NPT bleeder valve
- Complies with NACE MR0175/2009 and is suitable for service in hydrogen sulfide (H<sub>2</sub>S) environments
- Designed and manufactured in accordance with ASME B31.3 and provided with Canadian Registration Number
- **Optional corrosion coupon holders:** Rod (cylinder), flat (strip) single hole, flat (strip) dual hole or disc, all with 1/4-20 in hardware. Process connection can limit coupon choices – contact us if other coupon holder configurations are required
- Optional 6000 psi (414 bar) MOP at 100°F (38°C)



DPA-150 configuration

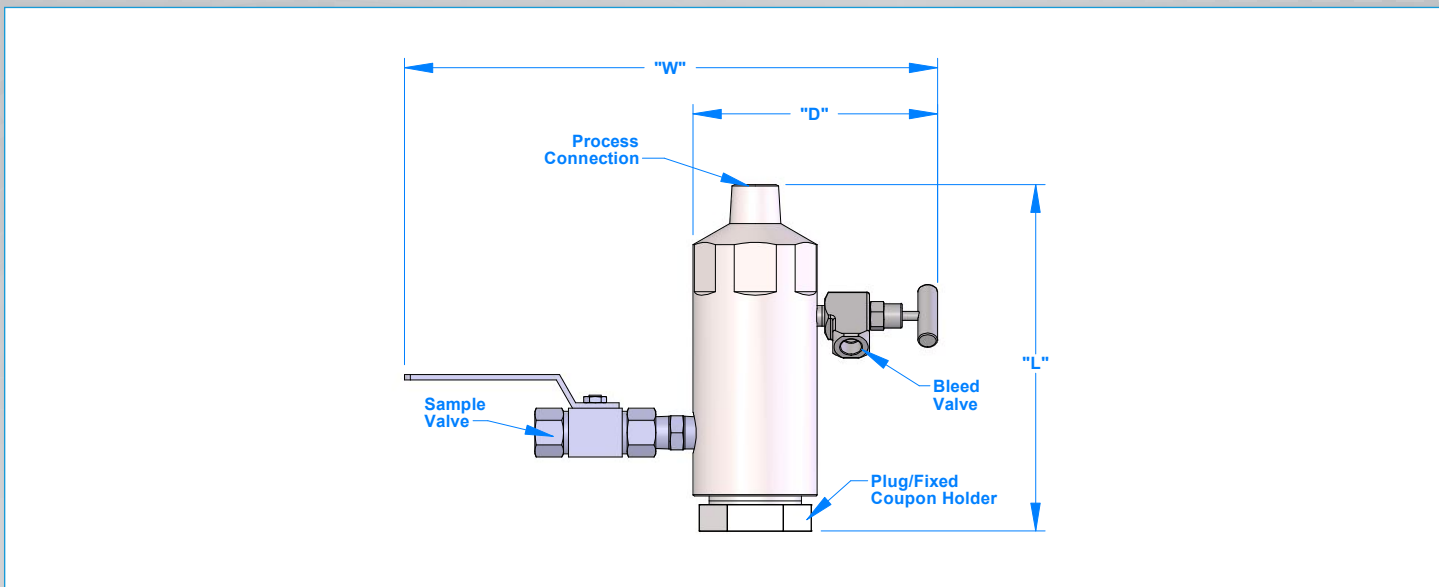


The engineering standards (ASME B 31.3), pressure testing procedures and traceability of materials of construction are PHMSA Mega Rule compliant.

Manufactured under one or more U. S. patents: 6,357,470 B1; 8,359,937 B2



Sample. Monitor. Measure.  
**SENTRY**  
Any Application. Anywhere.



model	volume	process connection	plug/fix coupon holder connection	"D" dim. in (mm)	"L" dim. in (mm)	"W" dim. w/ ball valve, in (mm)	weight lb (kg)
DPA-60	60 ml	1/2 in male NPT	1/2 in female NPT	4.75 (121)	11.25 (286)	11.75 (298)	7 (3)
		1/2 in male NPT	1 in female NPT	5 (127)	7 (178)	12 (305)	8 (4)
		3/4 in male NPT	1 in female NPT	5 (127)	7 (178)	12 (305)	9 (4)
		1 in male NPT	1 in female NPT	5 (127)	7 (178)	12 (305)	10 (5)
DPA-150	150 ml	1/2 in male NPT	1 in female NPT	5 (127)	12.75 (324)	12 (305)	10 (5)
		3/4 in male NPT	1 in female NPT	5 (127)	12.75 (324)	12 (305)	10 (5)
		1 in male NPT	1 in female NPT	5 (127)	12.75 (324)	12 (305)	10 (5)
DPA-300	300 ml	1 in male NPT	2 in female NPT	6.25 (159)	9 (229)	13.5 (343)	16 (7)
		1-1/2 in male NPT	2 in female NPT	6.25 (159)	9 (229)	13.5 (343)	16 (7)
		2 in male NPT	2 in female NPT	6.25 (159)	8.5 (216)	13.5 (343)	16 (7)
DPA-500	500 ml	1 in male NPT	2 in female NPT	6.25 (159)	12.5 (318)	13.5 (343)	20 (9)
		1-1/2 in male NPT	2 in female NPT	6.25 (159)	12.5 (318)	13.5 (343)	20 (9)
		2 in male NPT	2 in female NPT	6.25 (159)	12.5 (318)	13.5 (343)	20 (9)

Optional drain kits available: Part number 6-05742D for 1/2 in sample valve; part number 6-05742E for 3/4 in sample valve

[sentry-equip.com](http://sentry-equip.com)

966 Blue Ribbon Circle North, Oconomowoc, WI 53066 U.S.A. | +1-262-567-7256 | [sales@sentry-equip.com](mailto:sales@sentry-equip.com)



© 2019 Sentry Equipment Corp. All rights reserved. All product and company names are property of their respective owners. It is solely the responsibility of end users, through their own testing and analysis, to select products and materials suitable for their specific application requirements, ensure they are properly installed, safely applied and properly maintained, and to limit their use to their intended purpose. Improper selection, installation or use may result in personal injury or property damage.

S-PI-SPS-00073-6 01-24

COMPANY WITH  
QUALITY SYSTEM  
CERTIFIED BY DNV GL  
= ISO 9001 =